

# MERCURY.AI

## PRODUCT CATALOGUE

- Cameras
- NVRs
- Switches
- AI Detectors

THE  
FUTURE  
OF SMART  
SECURITY



MERCURY.AI

# About Us

**Mercury.AI** Solution is a technology company focused on developing and implementing modern security systems powered by artificial intelligence.

With in-house camera development and production, together with the integration of the Mercury X VMS platform and AI analytics, we deliver a cohesive system where hardware and software operate as a single, coordinated solution.



**€40.000.000 turnover  
in 2025**



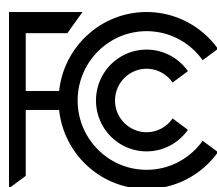
**2.500 Employees**



## Our certificates



**CE Certificate**



**FC Certificate**



**NDAA Certificate**

# OUR NEW FACTORY



Our new factory, spanning 22,000 square meters, marks a major strategic milestone for Mercury.AI and the regional technology ecosystem.

This state-of-the-art facility will create over 700 new jobs for engineers, technicians, and highly skilled workers, directly supporting knowledge retention and workforce development in the region.

By combining cutting-edge hardware manufacturing with our AI-driven software solutions, Mercury.AI is set to become a leading global player in the field of video surveillance and security systems.





# MERCURY.AI HARDWARE



# Bullet Cameras

(H series)



## MH-O181M-LI

8 MP Smart Dual Light Fixed Bullet Network Camera



## MH-O141M-LI

4MP VCA Fixed Bullet Network Camera



## MH-1141M-2I

4 MP VCA Smart Hybrid Light Fixed Bullet Network Camera





# Bullet Cameras

## (NH series)



### MNH-1162M-IL

6MP Hybrid Light Human/  
Vehicle PoE IP Bullet Camera



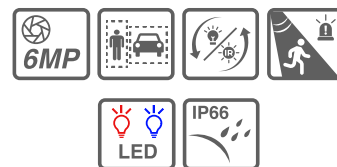
### MNH-0142M-IL

4MP Smart Detection IR PoE IP  
Mini Bullet Camera



### MNH-0162M-IL/SL

6MP Red&Blue Active  
Deterrence Bullet PoE IP Camera



### MNH-0182M-IL/SL

8MP Red&Blue Active  
Deterrence Bullet PoE IP Camera



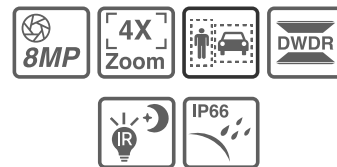
### MNH-0152M-IZ/SL 4X

5MP 4X Moto Lens Human/  
Vehicle IR Bullet POE IP Camera



### MNH-0182M-IZ/SL 4X

8MP 4X Moto Lens Human/  
Vehicle IR Bullet POE IP Camera





# Turret Cameras

## (H series)



### MH-3151M-LI

5MP Fixed Turret Network Camera



### MH-3181M-LI

8MP Smart Dual Light Fixed Turret Network Camera



### MH-3141M-LI/SL

4MP Hybrid Light Full Color Strobe Light and Audible Warning





# Turret Cameras

## (NH series)



### MNH-3182M-I

8MP Ultra Wide Smart Human/  
Vehicle Turret IP Camera



### MNH-3152M-IL

5MP Smart Dual-Light Fixed Mini  
Turret PoE IP Camera



### MNH-3182M-IL

8MP Human/Vehicle Dual light  
Mini Turret PoE Camera



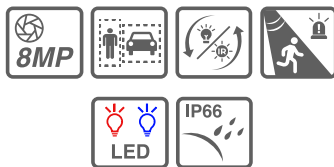
### MNH-31T2M-IL

12MP Dual Light Human/Vehicle  
Detection Turret Network Camera



### MNH-3182M-ILF/SL

8MP Red&Blue Active  
Deterrence Turret Camera



### MNH-3152M-IZ 5X

8MP 5X Moto Lens Human/Vehicle  
IR Bullet POE IP Camera





# Dome Cameras

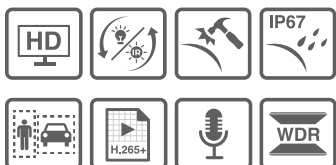
(H series)

(NH series)



## MH-2151MP-LI

5 MP Smart Dual Light Fixed Dome Network Camera



## MNH-2251M-I

4MP Smart Detection IR PoE IP Dome Camera



## MNH-2152M-IZ 4X

5MP 4X Moto Lens Human/Vehicle IR Dome POE IP Camera





# PTZ Cameras

## (H series)



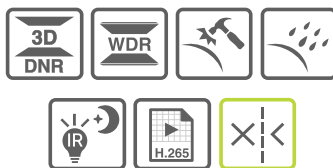
### MH-G152P-IL

5 MP Smart Hybrid Light Mini PT Network Camera



### MH-F141M-IZ 4X

4MP 4x IR Network PTZ Camera



### MH-F141M-IZ 25X

4 MP 25x Network IR PTZ Camera



## (NH series)



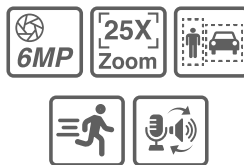
### MNH-P162M-ILZ 20X

6MP 20X Tracking Dual light Two-Way Audio wiper Wiper PTZ IP Dome Camera



### MNH-P162M-ILZ 25X

6MP 25X Tracking Dual light Two-way Audio wiper Wiper PTZ IP Dome Camera



### MNH-P182MP-ILZ 33X

8MP 33X 7-inch Tracking Dual light Outdoor PTZ IP Camera





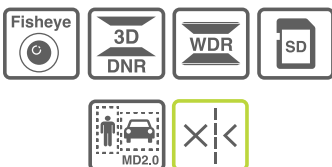
# Special Cameras

## Fisheye, Panoramic & 4-Directional



**MH-9151M-I**

5MP Fisheye Network Camera



**MH-3K161M-I/SL**

6 MP Panoramic Fixed Turret Network Camera



**MH-2M141M-IZ**

4-Directional Multisensor Network Camera





# Switches



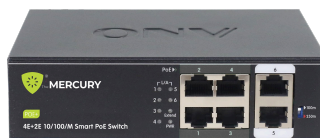
## H1016PL

16-port Gigabit Uplink PoE Switch



## H1024PL

24-port Gigabit Uplink PoE Switch



## H1064PL

4-port 10/100M PoE Switch



## H1108PL

8-port 10/100M PoE Switch





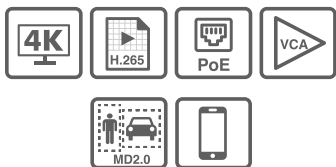
# NVR

(NH series)



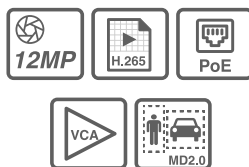
**MNH-N108R-1P8**

8CH AI NVR



**MNH-N116R-2P16**

16CH AI NVR



**MNH-N132R-2**

32CH AI NVR



# NVR

## (H series)



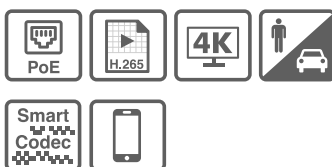
### MH-N108R-1P8

8CH AI NVR



### MH-N116R-2P16

16CH AI NVR



### MH-N108A-2P8

8CH AI NVR



### MH-N116A-2P16

16 CH PoE VCA NVR



### MH-N132A-2P16

32 CH VCA NVR



### MH-N132A-4P16

M Series 8K NVR





# AI SOLUTIONS



# Detectors/Plugins for CCTV:

<div>✓</div> <div>FACE RECOGNITION</div> <div>13</div>	<div>✓</div> <div>POSE ESTIMATION</div> <div>13</div>	<div>✓</div> <div>HAND GESTURES</div> <div>14</div>	<div>✓</div> <div>VIOLENCE DETECTION</div> <div>14</div>	<div>✓</div> <div>PROTECTION EQUIPMENT</div> <div>15</div>
<div>✓</div> <div>DANGER ZONE</div> <div>15</div>	<div>✓</div> <div>CAR CLASSIFICATION</div> <div>16</div>	<div>✓</div> <div>PLATE RECOGNITION</div> <div>16</div>	<div>✓</div> <div>FIRE &amp; SMOKE DETECTION</div> <div>17</div>	<div>✓</div> <div>FLOOD PREDICTION</div> <div>17</div>
<div>✓</div> <div>UNATTENDED ITEMS</div> <div>18</div>	<div>✓</div> <div>PEOPLE COUNTER</div> <div>18</div>	<div>✓</div> <div>TRACKER</div> <div>19</div>	<div>✓</div> <div>CROWD FREQUENCY MONITORING</div> <div>19</div>	<div>✓</div> <div>WEAPON DETECTION</div> <div>20</div>
<div>✓</div> <div>DRONE DETECTION</div> <div>20</div>	<div>SCHEDULE TEST DRIVE</div>			

## FACE RECOGNITION

Personal data is extremely sensitive, which is why Mercury AI handles it with the highest level of responsibility and caution. We fully comply with GDPR regulations, and the system never stores images or identifiable records. Instead, all data is saved exclusively as anonymized vector descriptors, abstract numerical representations, essentially sequences of numbers, from which the original photo cannot be reconstructed. This ensures complete protection of user identity.

### Features:

- **AUTOMATIC FACIAL DETECTION:** Whether from a photo or live video, our system identifies all faces instantly.
- **AI INSIGHTS:** For each detected face, the system estimates age, gender, and basic characteristics, enabling intelligent search and filtering later on.
- **SMART RE-IDENTIFICATION:** Immediate recognition of faces already present in the database — previously seen individuals.
- **EASY MANAGEMENT:** Assign names, attributes, and create profiles with just a few clicks.
- **DATABASE CREATION:** Build a private, secure catalogue of key individuals that the system can recognize in real time.



## POSE ESTIMATION

If the safety of your loved ones is a top priority and we believe it is, we have the right solution for you: software that recognizes specific body poses and can call for help.

Whether it's a child in a crib, a person on a bus, or elderly individuals in a care home, this system detects certain body positions or moments of falling and immediately alerts for assistance.

### Features:

- **INSTANT AND AUTOMATIC ALERTS:** Detects a fall and triggers an alarm system simultaneously.
- **PRIVACY AND DIGNITY PRESERVATION:** Provides 24/7 monitoring without relying on human intervention.
- **EASY INTEGRATION:** Designed to work with your existing surveillance systems.





## HAND GESTURES

Hand movements can convey many meanings, so it is crucial they do not go unnoticed.

Our system recognizes hand gestures and translates them into actions that simplify daily tasks and enhance the safety of your environment. Call for help, stop a dangerous machine, or activate a security system that locks doors and shutters windows, all with a simple hand gesture.

Features:

- **FINE MOVEMENT RECOGNITION:** The AI algorithm is trained to detect even the smallest finger, hand, or head movements, enabling discreet command execution.
- **AUTOMATED SECURITY CONTROL:** The system can enter security mode, locking doors, shuttering windows, or triggering alarms in response to predefined hand gestures.
- **HAZARD PREVENTION:** In industrial settings, the system can recognize gestures that stop machinery, preventing unwanted incidents.



## VIOLENCE DETECTION

Our violence detection system is the most effective protection dedicated to safeguarding your facilities, employees, and clients.

Features:

- **REAL-TIME VIOLENCE RECOGNITION:** The system detects physical violence such as fights, assaults, or sudden unwanted movements and instantly alerts the authorities.
- **BEHAVIOR PATTERN ANALYSIS:** The system's trained vision recognizes behavioral patterns that typically precede violent incidents, allowing it to flag unwanted situations before they occur.
- **PRECISE SITUATIONAL DIFFERENTIATION:** It reduces false alarms by distinguishing harmless activities such as sports, hugging, or dancing.



violence



## PROTECTION EQUIPMENT

On construction sites, safety is the top priority and our platform is your strongest ally in achieving it. By automatically detecting helmets and safety vests, you can prevent accidents before they occur.

Features:

- **REAL-TIME DETECTION AND ALERTS:** Instantly identifies whether workers are wearing helmets, gloves, goggles, or vests, and triggers an alert if any piece of equipment is missing.
- **RECOGNITION OF DIFFERENT TYPES OF GEAR:** The system is trained to detect a wide range of protective equipment, even in low-light conditions or from various camera angles.
- **EASY SYSTEM INTEGRATION:** The platform can be seamlessly added to existing infrastructure without requiring costly upgrades or additional construction.



## DANGER ZONE

Our hazard zone monitoring model uses AI technology to analyze video footage and detect when individuals enter high-risk areas.

By sending instant alerts, it helps prevent accidents and unauthorized access to sensitive zones.

Features:

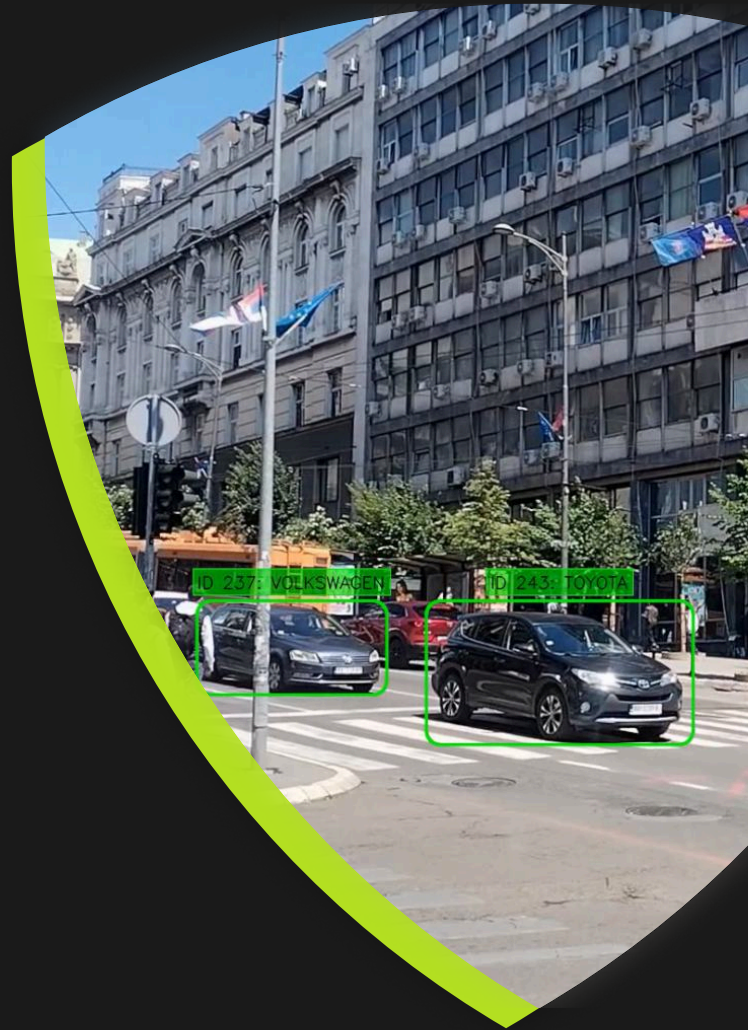
- Real-time detection of people in hazardous areas
- Adjustable virtual boundaries (geofencing)
- Works with existing security cameras
- Instant alerts and notifications
- Reliable protection around the clock



## CAR CLASSIFICATION

Mercury AI is a powerful solution that streamlines parking surveillance, supports smart city systems, and provides valuable insights for urban management.

Beyond simple detection, our vehicle classification system allows you to follow any car along its entire route, ensuring it never goes out of sight.



## PLATE RECOGNITION

With the ability to read up to 1,000 plates per second, our license plate recognition platform operates globally and delivers results in milliseconds. Whether plates use Latin, Cyrillic, Arabic, or any other script, our algorithm accurately recognizes them without exception.

Features:

- **ULTRA-FAST PROCESSING:** Our models identify license plates in milliseconds, enabling real-time monitoring of high-traffic environments.
- **MINIMAL RESOURCE USAGE:** Storage and server capacity are no longer a concern — our analytics can run efficiently on most devices or cloud services.
- **REAL-TIME TRACKING:** With more than 1,000 plates processed per second on standard, already existing, hardware, the system is ideal for toll booths, security checkpoints, and traffic enforcement—instantly and reliably.



## FIRE & SMOKE DETECTION

Every major fire starts as a barely noticeable trace of smoke. Timely response in this early stage is the only way to prevent damage.

Instead of relying on chance or periodic inspections, full protection depends on a system that never sleeps and reacts at the first sign of danger. From industrial plants to office spaces, and from forests to urban areas, a single fire detection system is all that's needed. It transforms every camera into an intelligent detector and reliable alarm that identifies fire signs in their earliest stages.

### Features:

- AI-powered real-time fire and smoke detection
- Compatible with most security cameras
- Supports 4K UHD connections with H.265 compression
- Built-in alarms and notifications
- Operates effectively in very low light, day or night



## FLOOD PREDICTION

Smart cities are our present, and the safety of their residents is a top priority.

Our flood prediction system continuously monitors river and water levels to detect potential flood risks early. This makes it an essential part of citizen safety in modern urban environments.

### Features:

- **SEAMLESS CONNECTIVITY:** Quickly integrates with mobile or web applications, providing instant insights into field conditions.
- **REAL-TIME MONITORING:** Allows tracking of water levels via video feeds or measurement instruments in real time.
- **MEASUREMENT ARCHIVE:** Stores and displays previous water level and flow data to analyze and learn from past events.

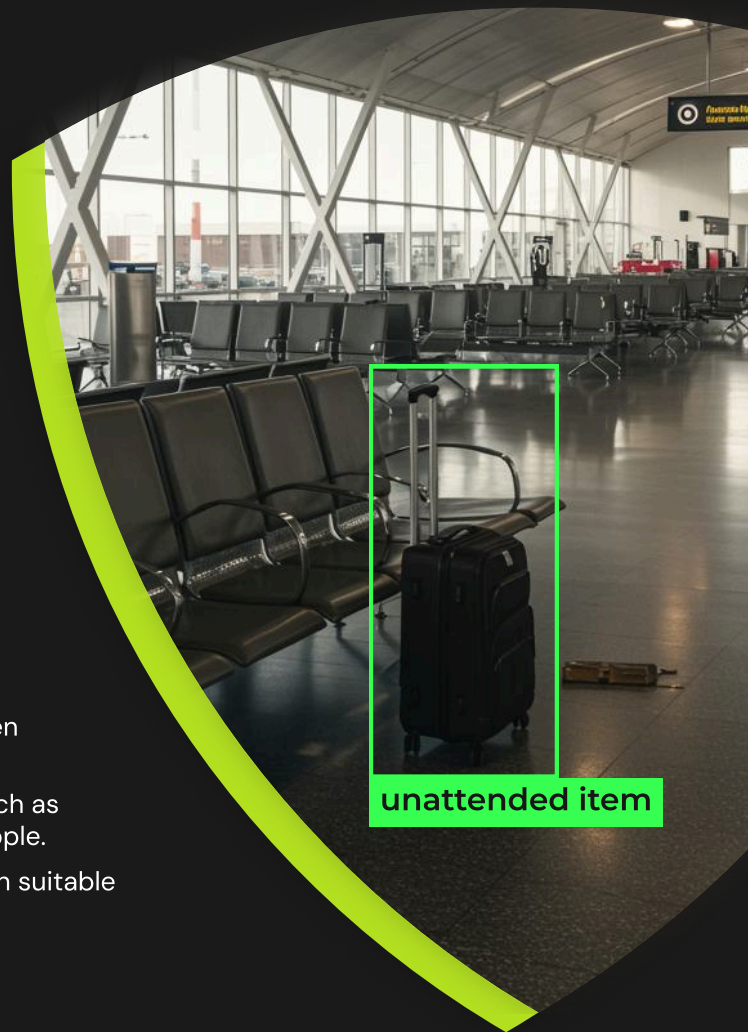


## UNATTENDED ITEMS

Unattended items in public spaces can be left accidentally or intentionally — in either case, they pose a problem, and our detection system addresses it effectively. Our system identifies when people separate from their belongings and sends an instant alert, turning potential loss or security risk into a resolved situation.

Features:

- **REAL-TIME DETECTION:** Supports live video feeds for instant recognition of unattended objects.
- **OBJECT TRACKING:** Continuously tracks both people and objects across video frames.
- **DISTANCE MEASUREMENT:** Calculates the distance between individuals and objects to determine abandonment.
- **CUSTOMIZABLE OBJECT CLASSES:** Track specific items such as backpacks, umbrellas, bags, suitcases, bottles, or even people.
- **EASY INTEGRATION:** Provides clearly structured information suitable for front-end visualization or alert systems.



## PEOPLE COUNTER

When there's no room for guesswork, let our software's trained eye handle the counting. This technology uses thermal cameras capable of counting in darkness, fog, rain, or smoke — 24 hours a day, 7 days a week. Regardless of weather conditions, it sees what others cannot, providing complete reliability and accurate data.

Features:

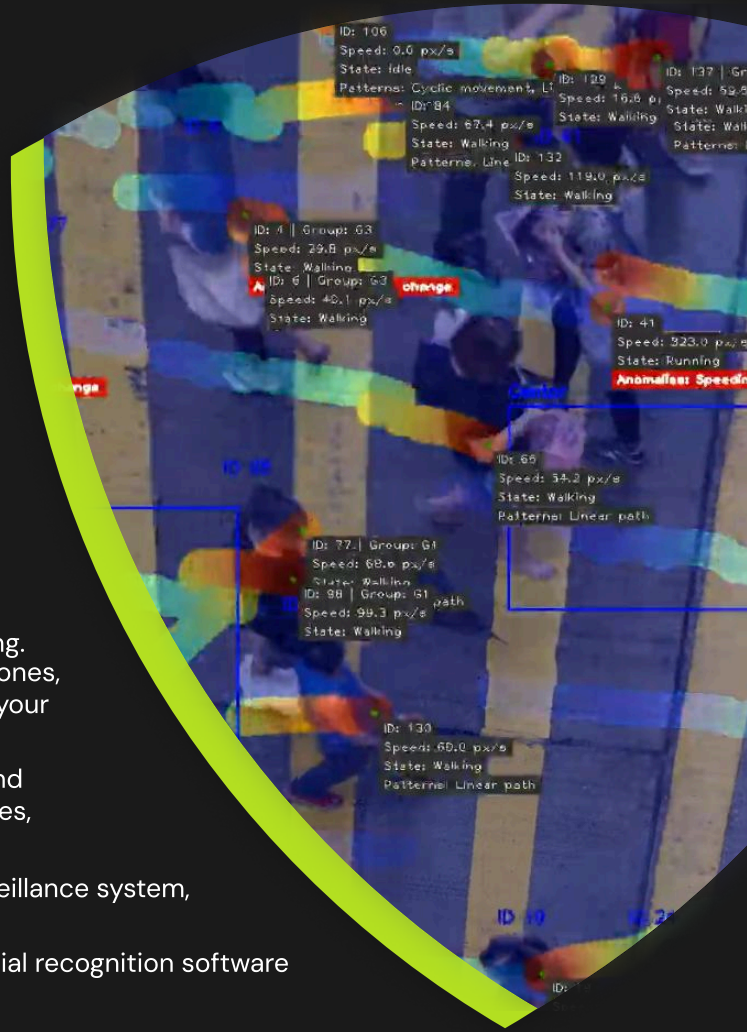
- High-precision AI-powered people counting
- Supports cameras capturing from various angles
- Reliable under changing lighting conditions or obstructions
- Generates density maps and analytical reports
- Integrates with existing cameras and surveillance systems

# TRACKER

While a human eye may lose sight of a person on camera, our Tracker never does. The system effortlessly follows an individual from camera to camera, forming a complete trajectory across different areas. Observe a continuous path of movement instead of fragmented frames or snapshots.

## Features:

- **SIMPLIFIED TRAJECTORY TRACKING:** Follow the entire path of any individual across your network without losing sight.
- **ADVANCED SPATIAL ANALYTICS:** Go beyond simple counting. Identify walking patterns, measure time spent in specific zones, detect bottlenecks, and understand how people truly use your space.
- **INSTANT FORENSIC SEARCH:** Locate a person of interest and immediately review their full trajectory across your premises, accelerated or in detail.
- **HARDWARE INDEPENDENCE:** Connect to your existing surveillance system, avoiding costly installations.
- **FACIAL RECOGNITION INTEGRATION:** Combine with our facial recognition software to monitor only selected individuals.

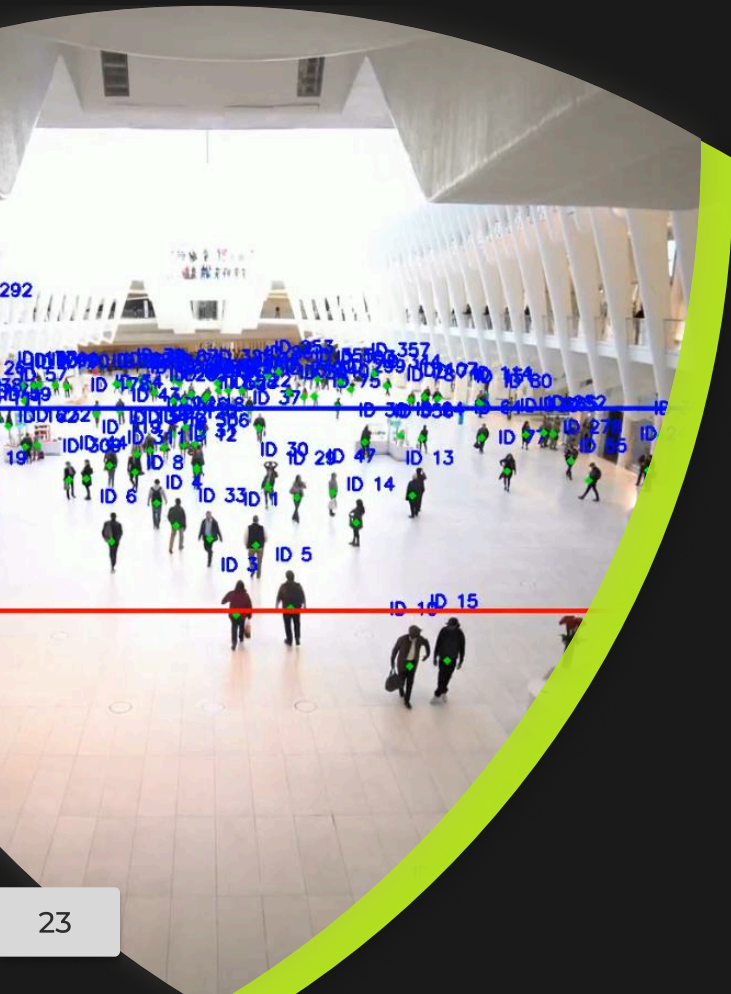


# CROWD FREQUENCY MONITORING

Business success often depends directly on visitor frequency. We provide a tool that precisely measures the number of passersby. Our AI counts customers, predicts queue formation, and identifies the most popular zones within your facilities. Additionally, it detects suspicious activities that may compromise safety. Increase security and eliminate risks with a single solution.

## Features:

- **MONITORS UNNECESSARY LOITERING:** Set time limits for staying in designated zones. Receive alerts if a person or vehicle remains longer than allowed.
- **PREVENT INCIDENTS WITH “WRONG WAY” ALERTS:** The system automatically detects vehicles or people moving in the opposite direction of intended flow, preventing accidents or security breaches.
- **ANALYZE UNUSUAL GROUP FORMATIONS:** Stay informed about atypical crowd gatherings and anticipate potential risks before they escalate.



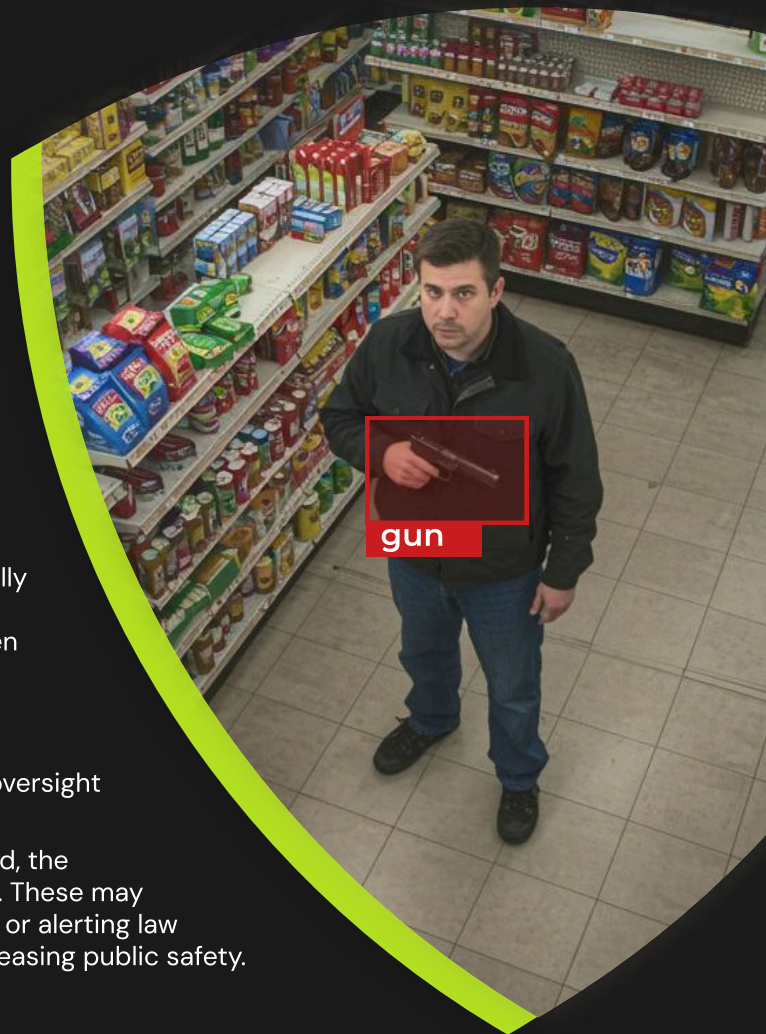


## WEAPON DETECTION

Create a digital shield around your schools, shopping centers, and public events. Our weapon detection platform provides continuous monitoring and sends instant alerts whenever it identifies any type of weapon. This is proactive technology dedicated to protecting environments and preserving human life.

Features:

- **WEAPON DETECTION:** A specialized AI algorithm successfully recognizes all types of weapons, both firearms and cold weapons. It instantly distinguishes between weapons and harmless items, preventing false alarms while ensuring that no dangerous object goes unnoticed.
- **SILENT AND DISCREET MONITORING:** The system runs 24/7, providing uninterrupted security support that human oversight cannot always maintain.
- **AUTOMATED INSTANT RESPONSE:** When a threat is detected, the system automatically triggers a series of predefined actions. These may include locking doors, activating facility lockdown protocols, or alerting law enforcement—significantly reducing response time and increasing public safety.



## DRONE DETECTION

Drones have become a real and rapidly growing security threat, from unauthorized flights over critical infrastructure to potential attacks and espionage.

MercuryAI has developed advanced drone detection software to identify, classify, and flag any suspicious aerial activity in real time.

Our technology enables rapid response and precise tracking, providing essential protection for airports, public gatherings, and other high-risk environments.





✉ [office@themercury.ai](mailto:office@themercury.ai)

🌐 [www.themercury.ai](http://www.themercury.ai)

